



From 1847
Benicia General Plan
Into the 21st Century

The official copy of the General Plan Land Use Diagram is kept at the City of Benicia Planning Department and is available for public viewing during regular business hours.

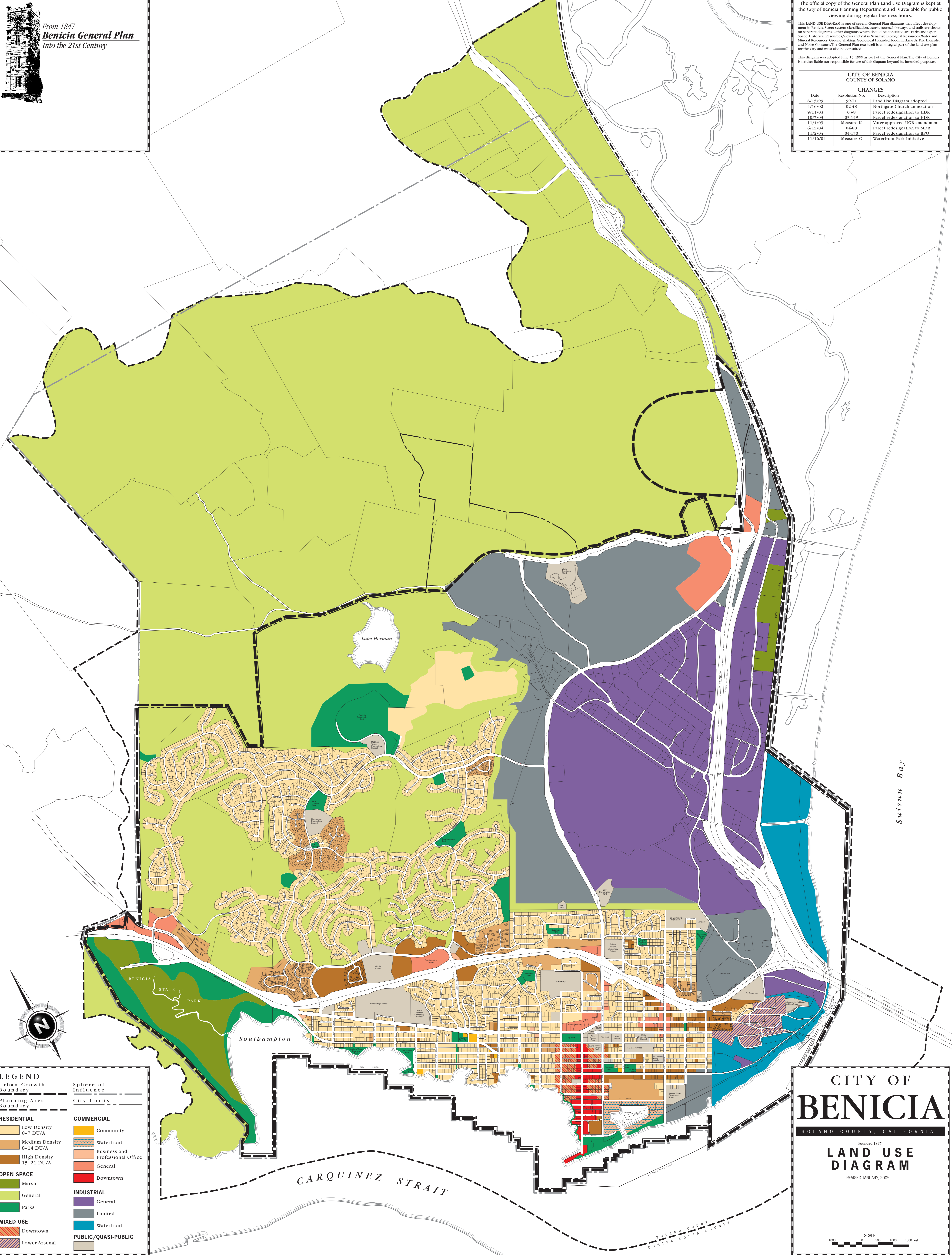
This LAND USE DIAGRAM is one of several General Plan diagrams that affect development in Benicia. Street system classification, transit routes, bikeways, and trails are shown on separate diagrams. Other diagrams which should be consulted are: Parks and Open Space, Historical Resources, Views and Vistas, Sensitive Biological Resources, Water and Mineral Resources, Ground Shaking, Geological Hazards, Flooding Hazards, Fire Hazards, and Noise Contours. The General Plan text itself is an integral part of the land use plan for the City and must also be consulted.

This diagram was adopted June 15, 1999 as part of the General Plan. The City of Benicia is neither liable nor responsible for use of this diagram beyond its intended purposes.

CITY OF BENICIA
COUNTY OF SOLANO

CHANGES

Date	Resolution No.	Description
6/15/99	99-71	Land Use Diagram adopted
4/16/02	02-48	Northgate Church annexation
9/11/03	03-8	Parcel redesignation to HDR
10/7/03	03-149	Parcel redesignation to HDR
11/4/03	Measure K	Vote-approved UGB amendment
6/15/04	04-88	Parcel redesignation to MDR
11/2/04	04-170	Parcel redesignation to BPO
11/16/04	Measure C	Waterfront Park Initiative



LEGEND

Urban Growth Boundary
Planning Area Boundary

RESIDENTIAL

- Low Density 0-7 DU/A
- Medium Density 8-14 DU/A
- High Density 15-21 DU/A

OPEN SPACE

- Marsh
- General
- Parks

MIXED USE

- Downtown
- Lower Arsenal

COMMERCIAL

- Community
- Waterfront
- Business and Professional Office
- General
- Downtown

INDUSTRIAL

- General
- Limited
- Waterfront

PUBLIC/QUASI-PUBLIC

- General

Sphere of Influence

- City Limits

CITY OF BENICIA
SOLANO COUNTY, CALIFORNIA

Founded 1847
LAND USE DIAGRAM
REVISED JANUARY, 2005

SCALE
0 500 1000 1500 Feet

Suisun Bay

CARQUINEZ STRAIT

SOLANO COUNTY
CONTRA COSTA COUNTY